

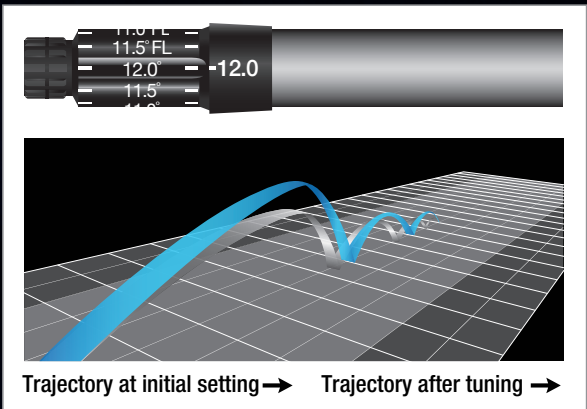
# TECHNICALLY, IT'S ONE DRIVER. BUT IT'S MORE LIKE 12 IN ONE.

The adjustable hosel sleeve on the HiBore XL Driver goes from 9° to 12° in 0.5° increments. Altogether, that's 12 possible adjustments that pretty much guarantee you'll find the right setup for your swing.

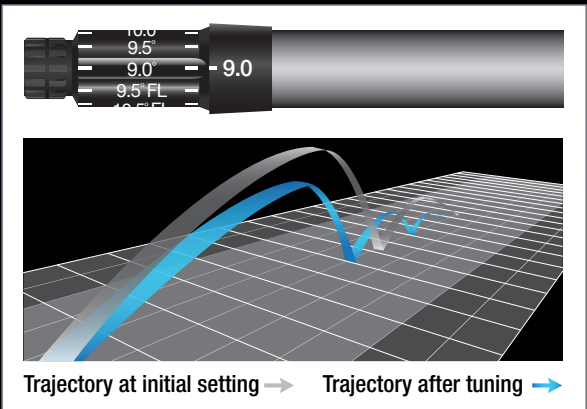
The four primary loft settings are marked on the sleeve at 9°, 10.5°, 12°, 10.5° FL. The settings between each of those marks are visible on the pre-installed shaft tip.



**BALL LAUNCHING TOO LOW?  
INCREASE LOFT UP TO 12 DEGREES.**



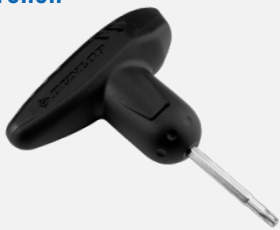
**BALL LAUNCHING TOO HIGH?  
LOWER LOFT DOWN TO 9 DEGREES.**



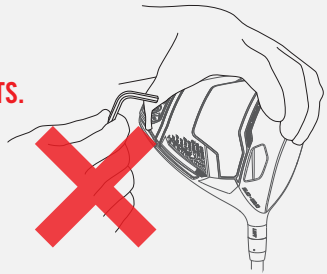
Adjusting the Driver's loft also has a slight impact on your face and lie angles. The chart below will help you decide which configuration is right for your swing.

Position	LOFT -10.5	LOFT -10.5	LOFT -12.0	LOFT -12.0	LOFT -12.0	LOFT -12.0	LOFT -10.5 FL	LOFT -10.5 FL	LOFT -10.5 FL	LOFT -10.5 FL	LOFT -9.0	LOFT -9.0	LOFT -9.0	LOFT -10.5
Loft	10.5	11.0	11.5	12.0	11.5 FL	11.0 FL	10.5 FL	10.0 FL	9.5 FL	9.0	9.5	10.0		
Face positioning	Straight face	Closed face				Straight face				Open face				
Lie angle	Standard	Moderately Flat				Flat				Moderately Flat				
	STANDARD	0.5° FLAT	1.0° FLAT	1.5° FLAT	2.0° FLAT	2.5° FLAT	3° FLAT	2.5° FLAT	2.0° FLAT	1.5° FLAT	1.0° FLAT	0.5° FLAT		

## Dunlop Torque Wrench

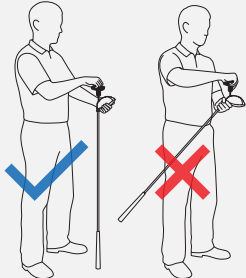


**USE ONLY THE CUSTOM  
TORQUE WRENCH WHEN  
MAKING HOSEL ADJUSTMENTS.**

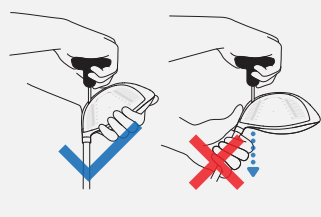


## How to remove and install QTS sleeve (torque wrench operation)

**1** Hold the club upright with the grip resting on the ground. Use this position when loosening and tightening.



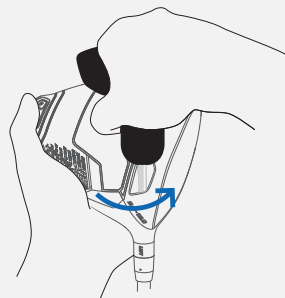
**2** Supporting the head in your hand, gently insert the torque wrench into the screw hole.



Shaft and torque wrench should form a straight line

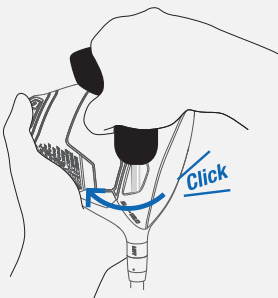
Improperly aligned torque wrench

**3 Loosen**  
With the torque wrench aligned with the shaft, turn it counterclockwise.



\*Shaft will come off without loosening the screw too much.

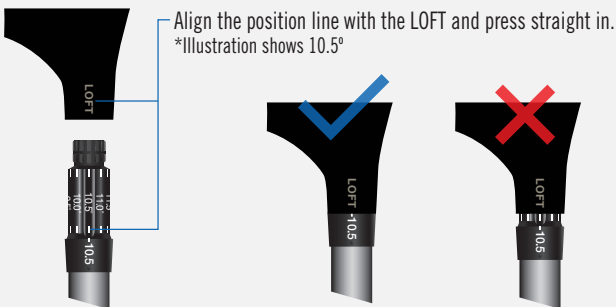
**4 Tighten**  
With the torque wrench aligned with the shaft, turn it clockwise until you hear a click.



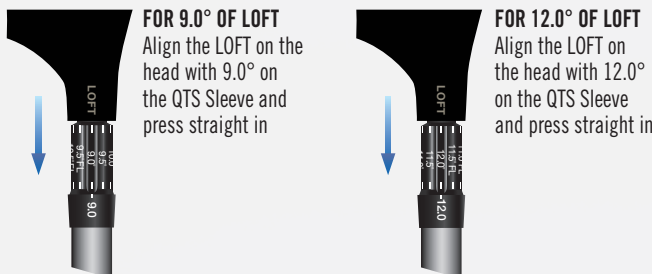
\*Always tighten until you hear a 'click'. Failure to do so may result in separation of the club head or product damage.

## How to remove and install QTS sleeve (Sleeve Installation)

### 5 Insert the shaft into the head



### 6 QTS setting examples



## Important Precautions

To ensure a safe and satisfying golfing experience, please be sure to follow these Important Precautions.

Be sure to read the Important Precautions carefully and exercise appropriate care. The manufacturer assumes no liability for injury or product damage due to failure to comply with the instructions herein.

### Rules of Golf

It is against the rules to modify club performance during a round by changing the QTS sleeve position or exchanging weights to change the CG position, as this breaches the Rules of Golf regulation 4-2a, which states: "During a stipulated round, the playing characteristics of a club must not be purposely changed by adjustment or by any other means."

### Before using

**Check to see that the QTS sleeve is properly secured.**

Tighten until you hear a "click". If you fail to properly secure the sleeve, there is a possibility that the head may come off mid swing, injuring either you or a bystander.